

ECG LD 174201

Extendable swivel and tilt TV holder

Product code: 100000902768

EAN: 8592131176560

- For LED / LCD TV with diagonal: 17" - 42"
- Offset from the wall: 56-356 mm
- VESA: 75x75 up to 200x200
- Maximum load: 25 kg

- For LED/LCD TV with diagonal: 17" - 42"
- TV holder with space for cables
- Extendable swivel and tilt arm

- Offset from the wall: 56-356 mm
- Adjustable tilt: -2° up to 15°
- VESA: 75x75 up to 200x200

- Installation accessories are included
- Maximum load: 25 kg

Technical parametrs

TV size	17-42"
MAaximum TV weight (kg)	25
VESA	75x75 - 200x200
Tilt	-2°-15°
Turn	+/-90°
Distance to the wall (mm)	56-356
Cable storage	Yes

Weight & dimensions

WIDTH (MM)	225
HEIGHT (MM)	227
LENGTH (MM)	355
WEIGHT (KG)	1.9

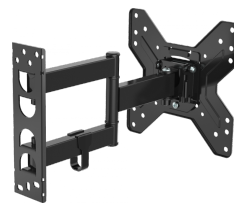
Weight & dimensions

(Brutto)

WIDTH WITH PACKAGING (MM)	268
HEIGHT WITH PACKAGING (MM)	285
DEPTH WITH PACKAGING (MM)	80
WEIGHT WITH PACKAGING (KG)	2.1

Holder for TV sets 17-42"

Do you want to mount the TV on the wall? The **ECG LD 174201** mount is designed for televisions with the diagonal ranging from 17 to 42". Thanks to the great load capacity of up to 25 kg, you don't have to worry that it would not carry the weight of your TV. The size for the so-called VESA mount for this model is 75×75 to 200×200. The advantage of the mount is also the possibility of setting the distance from the wall from 56 to 356 mm.



The extendable, swivelling and tilting arm ensures great comfort for your TV watching. In addition, the mount contains a practical cable storing space. Installation accessories are included in the packaging.